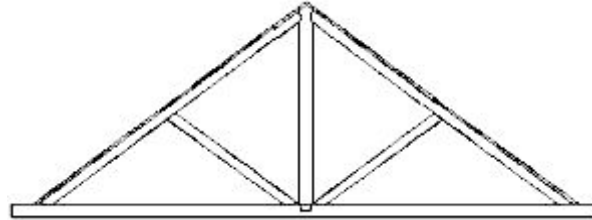




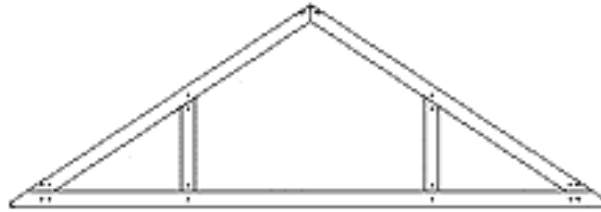
OKANAGAN
TIMBER
FRAME
COMPANY

HEAD OFFICE & MANUFACTURING PLANT:
15670 Sawmill Road, Lake Country, BC, CANADA V4V 2E2
Telephone (250) 548-3236 • Fax (250) 548-3252

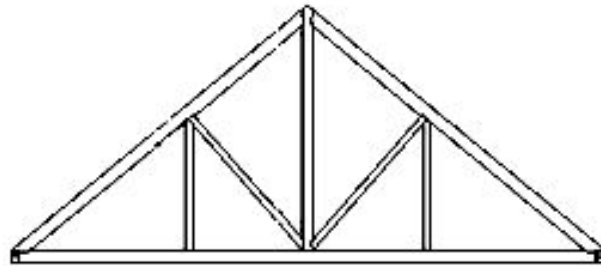
Standard Timber Frame Truss Options



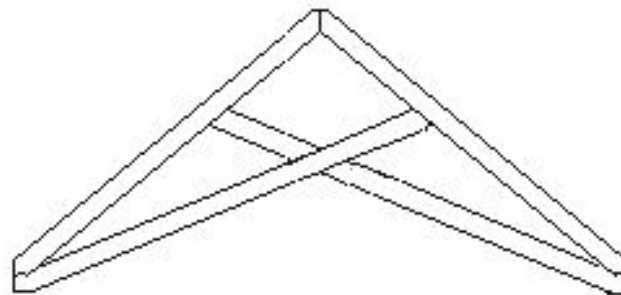
King Post



Queen Post



Howe Truss



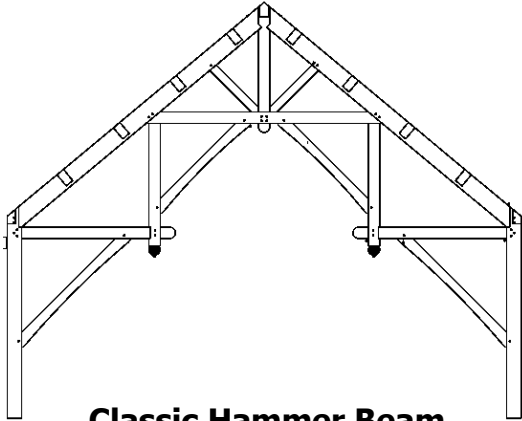
Scissor Truss



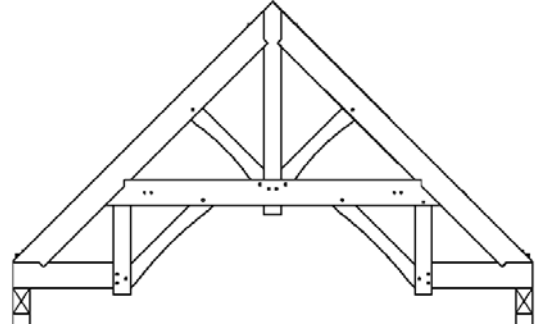
**OKANAGAN
TIMBER
FRAME
COMPANY**

HEAD OFFICE & MANUFACTURING PLANT:
15670 Sawmill Road, Lake Country, BC, CANADA V4V 2E2
Telephone (250) 548-3236 • Fax (250) 548-3252

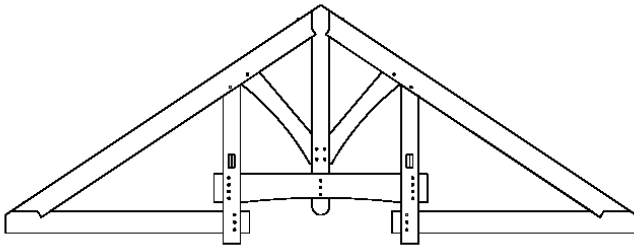
Okanagan Timber Frame – Custom Truss Options



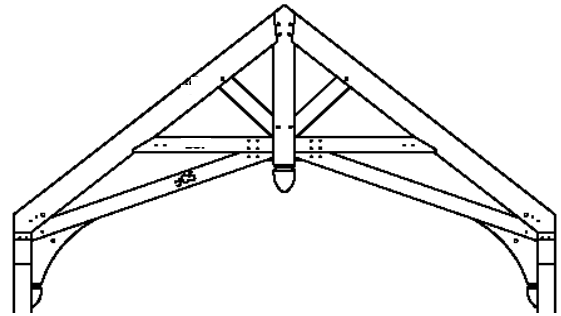
Classic Hammer Beam



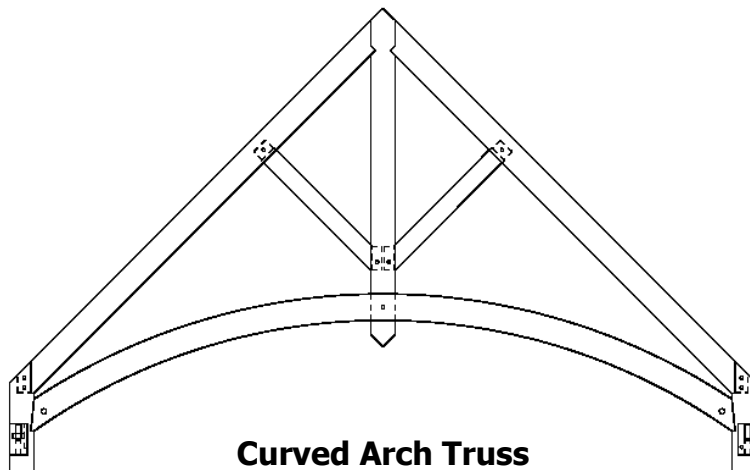
Fink Truss



Split Bottom Chord (SBC) Truss



Stoker Truss



Curved Arch Truss